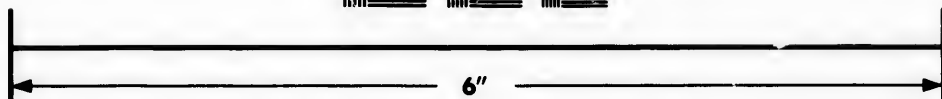
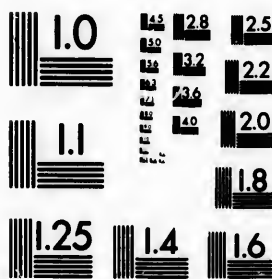


**IMAGE EVALUATION
TEST TARGET (MT-3)**



**Photographic
Sciences
Corporation**

23 WEST MAIN STREET
WEBSTER, N.Y. 14580
(716) 872-4503

LES 12.8
12.8
13.2
13.2
13.6
13.6
14
14
18
18

**CIHM/ICMH
Microfiche
Series.**

**CIHM/ICMH
Collection de
microfiches.**



Canadian Institute for Historical Microreproductions / Institut canadien de microreproductions historiques

11
10
10
10

© 1982

Technical and Bibliographic Notes/Notes techniques et bibliographiques

The Institute has attempted to obtain the best original copy available for filming. Features of this copy which may be bibliographically unique, which may alter any of the images in the reproduction, or which may significantly change the usual method of filming, are checked below.

L'Institut a microfilmé le meilleur exemplaire qu'il lui a été possible de se procurer. Les détails de cet exemplaire qui sont peut-être uniques du point de vue bibliographique, qui peuvent modifier une image reproduite, ou qui peuvent exiger une modification dans la méthode normale de filmage sont indiqués ci-dessous.

- Coloured covers/
Couverture de couleur
- Covers damaged/
Couverture endommagée
- Covers restored and/or laminated/
Couverture restaurée et/ou pelliculée
- Cover title missing/
Le titre de couverture manque
- Coloured maps/
Cartes géographiques en couleur
- Coloured ink (i.e. other than blue or black)/
Encre de couleur (i.e. autre que bleue ou noire)
- Coloured plates and/or illustrations/
Planches et/ou illustrations en couleur
- Bound with other material/
Relié avec d'autres documents
- Tight binding may cause shadows or distortion
along interior margin/
La reliure serrée peut causer de l'ombre ou de la
distortion le long de la marge intérieure
- Blank leaves added during restoration may
appear within the text. Whenever possible, these
have been omitted from filming/
Il se peut que certaines pages blanches ajoutées
lors d'une restauration apparaissent dans le texte,
mais, lorsque cela était possible, ces pages n'ont
pas été filmées.
- Additional comments:/
Commentaires supplémentaires:

- Coloured pages/
Pages de couleur
- Pages damaged/
Pages endommagées
- Pages restored and/or laminated/
Pages restaurées et/ou pelliculées
- Pages discoloured, stained or foxed/
Pages décolorées, tachetées ou piquées
- Pages detached/
Pages détachées
- Showthrough/
Transparence
- Quality of print varies/
Qualité inégale de l'impression
- Includes supplementary material/
Comprend du matériel supplémentaire
- Only edition available/
Seule édition disponible
- Pages wholly or partially obscured by errata
slips, tissues, etc., have been refilmed to
ensure the best possible image/
Les pages totalement ou partiellement
obscurcies par un feuillet d'errata, une pelure,
etc., ont été filmées à nouveau de façon à
obtenir la meilleure image possible.

This item is filmed at the reduction ratio checked below/
Ce document est filmé au taux de réduction indiqué ci-dessous.

10X	12X	14X	16X	18X	20X	22X	24X	26X	28X	30X	32X
<input type="checkbox"/>	<input type="checkbox"/>	<input type="checkbox"/>	<input type="checkbox"/>	<input type="checkbox"/>	<input type="checkbox"/>	<input checked="" type="checkbox"/>	<input type="checkbox"/>	<input type="checkbox"/>	<input type="checkbox"/>	<input type="checkbox"/>	<input type="checkbox"/>

The copy filmed here has been reproduced thanks to the generosity of:

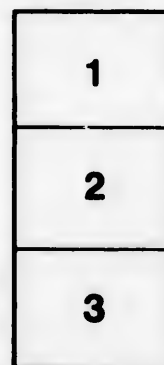
Library Division
Provincial Archives of British Columbia

The images appearing here are the best quality possible considering the condition and legibility of the original copy and in keeping with the filming contract specifications.

Original copies in printed paper covers are filmed beginning with the front cover and ending on the last page with a printed or illustrated impression, or the back cover when appropriate. All other original copies are filmed beginning on the first page with a printed or illustrated impression, and ending on the last page with a printed or illustrated impression.

The last recorded frame on each microfiche shall contain the symbol \rightarrow (meaning "CONTINUED"), or the symbol ∇ (meaning "END"), whichever applies.

Maps, plates, charts, etc., may be filmed at different reduction ratios. Those too large to be entirely included in one exposure are filmed beginning in the upper left hand corner, left to right and top to bottom, as many frames as required. The following diagrams illustrate the method:



L'exemplaire filmé fut reproduit grâce à la générosité de:

Library Division
Provincial Archives of British Columbia

Les images suivantes ont été reproduites avec le plus grand soin, compte tenu de la condition et de la netteté de l'exemplaire filmé, et en conformité avec les conditions du contrat de filmage.

Les exemplaires originaux dont la couverture en papier est imprimée sont filmés en commençant par le premier plat et en terminant soit par la dernière page qui comporte une empreinte d'impression ou d'illustration, soit par le second plat, selon le cas. Tous les autres exemplaires originaux sont filmés en commençant par la première page qui comporte une empreinte d'impression ou d'illustration et en terminant par la dernière page qui comporte une telle empreinte.

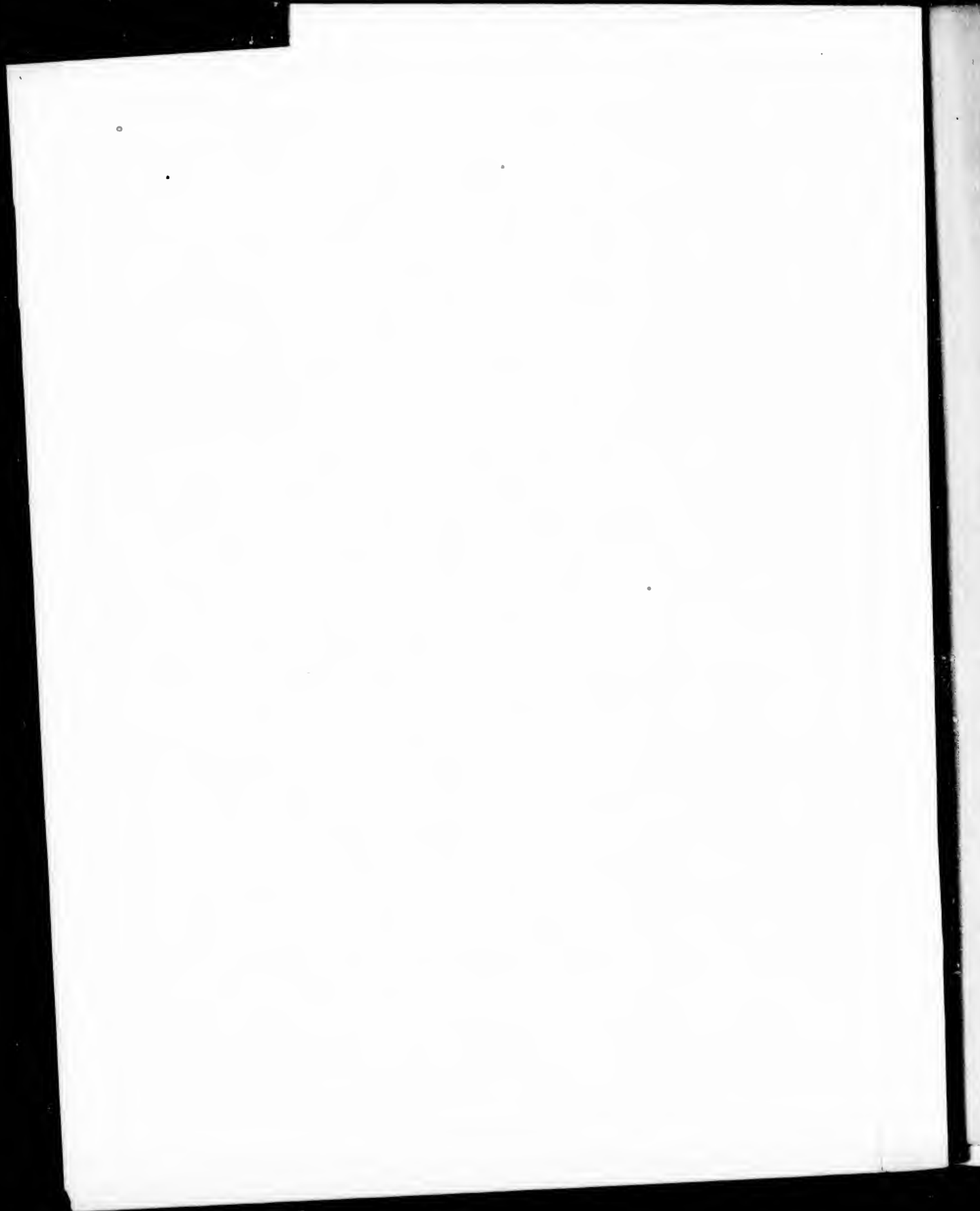
Un des symboles suivants apparaîtra sur la dernière image de chaque microfiche, selon le cas: le symbole \rightarrow signifie "A SUIVRE", le symbole ∇ signifie "FIN".

Les cartes, planches, tableaux, etc., peuvent être filmés à des taux de réduction différents. Lorsque le document est trop grand pour être reproduit en un seul cliché, il est filmé à partir de l'angle supérieur gauche, de gauche à droite, et de haut en bas, en prenant le nombre d'images nécessaire. Les diagrammes suivants illustrent la méthode.

ails
du
odifier
une
mage

rrata
to

pelure,
n à



New Westminster, British Columbia.

ABSTRACT OF METEOROLOGICAL OBSERVATIONS,

TAKEN AT THE ROYAL ENGINEER CAMP;

During the Year 1862, by order of Col. R. C. MOODY, R. E., Commanding the Troops.

LATITUDE, 49° 12' 47" 5 N. LONGITUDE, 122° 53' 19" W.

					INCHES.	
The highest reading of the Barometer, corrected for temperature, was					30.517	9th Feb.
The mean height	do.	do.	do., at 9.30. A.M.		29.983	
Do.	do.	do.	do., at 3.30. P.M.		29.963	
The lowest	do.	do.	do.	29.071	22nd Jan.
					DEGREES.	
Maximum temperature in sun's rays (black bulb,)				104.0	29th Aug.
Maximum temperature of Air, in shade				88.5	do.
Do.	do.	do.	9.30. A.M.	73.9	23rd July.
Do.	do.	do.	3.30. P.M.	86.0	28th Aug.
Mean temperature of Air, in shade.....			9.30. A.M.	46.8	
Do.	do.	do.	3.30. P.M.	51.2	
Minimum temperature of Air, in shade			9.30. A.M.	2.0	below zero, 15th Jan.
Do.	do.	do.	3.30. P.M.	6.0	15th Jan.
Minimum temperature on the Grass				15.0	below zero, 16th Jan.
Greatest amount of Humidity				1.000	
Mean	do.	do.	9.30 A.M.842	
Do.	do.	do.	3.30 P.M.772	
Least	do.	do.	320	3rd Jan.

The cistern of the Barometer is about 54 feet above the level of the Sea. All the Observations were made at 9.30. A.M. and 3.30. P.M. daily throughout the year.

There were slight frosts nearly every night in the month of April, and once in May (16th;) they did not recommence until the 9th of October. The severe frosts of January, and February, have been unknown for many years.

Thunder and Lightning occurred on the 24th May, 24th July, and 22nd, 29th, and 30th of August.

Table shewing the depth of rain, the number of days on which it fell, the mean humidity (9.30. A.M. and 3.30. P.M.) mean temperature of the air in shade, and the lowest temperature on the grass in each month.

	INCHES.	DAYS.	HUMIDITY.	9. 30. A.M.	3. 30. P.M.	MIN. ON GRASS,	
January	3.480	9	.855	19.0	23.0	15.0	below zero.
February	5.727	8	.815	30.3	34.2	2.0	
March	5.830	17	.862	38.0	41.7	23.0	
April	2.345	14	.767	45.5	51.3	26.0	
May	3.415	13	.718	57.1	62.1	31.5	
June	2.760	10	.712	62.7	67.1	40.0	
July	2.709	12	.713	63.2	67.7	44.0	
August	2.930	8	.787	63.5	69.8	43.0	
September	1.625	9	.751	58.4	62.7	33.5	
October	4.605	10	.869	49.3	52.9	23.0	
November	4.050	8	.938	37.9	41.7	22.0	
December	7.990	17	.948	36.7	39.7	18.5	

TOTAL.....47.466 135

Rain fell on 8 days when the wind was South, 4—S.W., 3—W., 5—N.W., 8—N.E., 43—E., 26—S.E. and 38 when calm.

The greatest fall of rain in 24 hours measured 2.260 inches, and was on the 20th March. The average fall for every day of the year was 0.130 inches, and for each wet day it was 0.352.

The amount of Ozone this year was very small, its mean daily number would be represented by 3 on the scale, and it seldom exceeded 6. During the greater part of October, November, and December, there was little indication of its presence. In November and the early part of December there were heavy fogs, during which there was no Ozone.

Comparison of mean results for three Years.

Years.	Rain,		Mean Temperature.		Min. on Grass	Humidity		Mean height of Barometer.	
	INCHES.	DAYS.	9.30. A.M.	3.30. P.M.		9.30. A.M.	3.30. P.M.	9.30. A.M.	3.30. P.M.
1860	54.420	151	49.9	54.0	15.6	.847	.796	29.042	29.919
1861	60.485	104	48.8	52.2	10.0	.764	.854	29.943	29.889
1862	47.406	135	46.8	51.2	15.0 below z.	.842	.772	29.983	29.968
Means.	54.124	150	48.5	52.5		.818	.797	29.956	29.924

Rain was more equally distributed throughout all the months this year than in 1860 or 1861.

In the winter months, January to March, and October to December, 31.682 inches of rain fell in 1862, 41.230 in 1861, and 40.586 inches in 1860. In the remaining months 15.785 inches fell in 1862, 19.255 in 1861 and 13.834 in 1860.

The prevailing direction of the wind during rain in each year was E. and S.E. The absolute limiting nights of frost in the three years were nearly the same.

The Fraser River at New Westminster,

Year.	Highest level.	lowest level	Diff. of level	Remarks.
1860	12th June	4th March	10.5 Feet	From 22nd May to 12 Aug. ships did not swing to the flood tide.
1861	8th June	17th March	9.5 Feet	" 19th May to 10th Aug. Do. do.
1862	14th June	19th April	10.5 Feet	" 1st May to 2nd September, Do. do.

Ice appeared on the 1st of January 1862, and the river at New Westminster was unnavigable on the 4th, it was completely frozen over on the 9th, and the Ice attained a thickness of 13 inches in the channel opposite the R. E. Camp, on the 12th of February. Sleighs were running from Langley, to several miles below New Westminster, and persons walked from Hope to the latter place, a distance of 80 miles on the ice, at the end of January. Lake Harrison and the other Lakes were frozen. Navigation from New Westminster was open to the mouth of the river on the 11th of March, and from Yale on the 12th April. Again on the 5th December, there was Ice in the River at New Westminster for one day. In January, 1861 there was ice at New Westminster, but the Navigation to the mouth of the River was not impeded. In 1860 there was no Ice.

The Observations were taken by 2nd Corporal P. J. LEECH, and Lance Corporal J. CONROY, R. E.

R. M. PARSONS, Captain R. E.

S.E.

erage

8 on
there
y fogs,

1862,
19.255

limiting

able on
in the
several
miles on
m New
April.
January,
impeded.

E.

in R. E

